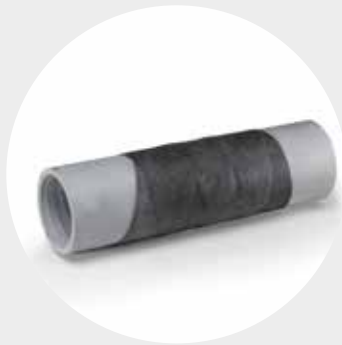




CHAMPION DUCT™ FIBERGLASS REPAIR KIT



*Each kit contains a roll of knitted fiberglass tape precoated with water activated polyurethane resin enclosed in a sealed foil pouch, latex gloves and printed instructions.

The Champion Duct™ Fiberglass Repair Kit is a water-activated, fast curing, in-field fiberglass conduit repair system, ideal for cracks, breaks, reinforcing joints, rebuilding conduit wall strength and corrosion proofing – in virtually any situation, even underwater!

The Champion Duct™ Fiberglass Repair Kit includes a strong fiberglass knitted tape, precoated with fast setting water-activated urethane resin.

The Champion Duct™ Fiberglass Repair Kit can be installed by one person with no special tools, and provides for quick, in-field repairs, repairing conduits in as little as 30 minutes.

The Champion Duct™ Fiberglass Repair Kit is used for:

Routine and Emergency Conduit Repairs • Structural Reinforcement • Sealing Joints Rebuilding Conduit side Walls • Corrosion Proofing • Abrasion Protection • Repairs in Hard to Reach Areas.

The Champion Duct™ Fiberglass Repair Kit is used by:

Petrochemical • Industrial processing • Pulp and paper • Military • Marine • Irrigation • Power generation Facilities maintenance • Water/wastewater • Manufacturing • Food processing • Pharmaceutical • Automotive.

Champion Duct™ Fiberglass Repair Kit contents:

Knitted fiberglass tape with water-activated, fast setting polyurethane resin • Gloves for easy clean-up • Detailed instructions



CERTIFIED
ISO 9001 • ISO 14001 • ISO 45001

championfiberglass.com

CHAMPION DUCT™ FIBERGLASS REPAIR KIT

Technical Information

Compatibility and Chemical Resistance: The Champion Duct Fiberglass Repair Kit™ combined may be used with any type of fiberglass conduit or piping and is generally compatible with the following classes of chemicals: hydrocarbons, petrochemicals, fuels, organics, acids, bases, water, steam, salts and slurries. The durability of the repair may be affected by very strong acids (pH under 3) or bases (pH over 12).

Shelf Life: 2 years from date of purchase when stored at 40°F to 83°F (5°C to 28°C).

Color: Black

Tensile Strength: 24,950 psi / in width/172 MPa (ASTM D 3039)

Modulus: 62,505 psi / 4309 MPa (ASTM D 3039)

Flexural Yield Strength: 12,005 psi / 82.77 MPa (ASTM 790)

Durometer Hardness: 63 Shore D (ASTM D 2240)

Temperature/Heat Resistance:

From -20°F up to 250°F (-29°C to 121°C) – continuous. From 250°F to 500°F (121°C to 260°C) – temporary exposures. If possible, the conduit/pipe should be at ambient temperature before application.

Champion Duct Fiberglass Repair Kit™ is compliant with US DOT 49CFR parts 192 and 195. Testing was performed under the guidelines of ASME PCC-2, Article 4.1.

Set Time: Tack free in 3 to 5 minutes at ambient temperatures of 50°F to 80°F (10°C to 27°C). Set time is slower below 50°F and faster above 80°F.

Cure Time: Normally cures in 30 minutes at ambient temperatures between 50°F to 80°F (10°C to 27°C). Longer cure times may occur when ambient temperature is less than 50°F (10°C). Heat may be applied to accelerate cure times. Cure time is greatly accelerated at extremely high ambient or pipe surface temperatures. The UNOPENED foil pouch may be immersed in cool water for at least 15 minutes to slow set and cure times and to provide ease of handling.

Ordering Information

PART NUMBER: BLACK	CHAMPION DUCT FIBERGLASS REPAIR KIT™ SYSTEM SIZE (PACKAGED 10 PER CASE)	WEIGHT LBS/KGS
CF-RK2x4-BLK	2" x 4'/5.08cm x 1.2m	4/1.8
CF-RK2x12-BLK	2" x 12'/5.08cm x 3.6m	6/2.7
CF-RK4x12-BLK	4" x 12'/10.16cm x 3.6m	8/3.6
CF-RK4x25-BLK	4" x 25'/10.16cm x 7.62m	14/6.3

Champion Duct™ Fiberglass Repair Kit does not contain any Volatile Organic Compound (VOC) as defined in the USA for regulatory purposes (ASTM used as a guideline).



CERTIFIED
ISO 9001 • ISO 14001 • ISO 45001

6400 Spring Stuebner Rd.
Spring, TX 77389

Main: 281.655.8900
Fax: 281.257.2523